

307

TUHAN 'KU CINTA DIKAU

John E. Sung

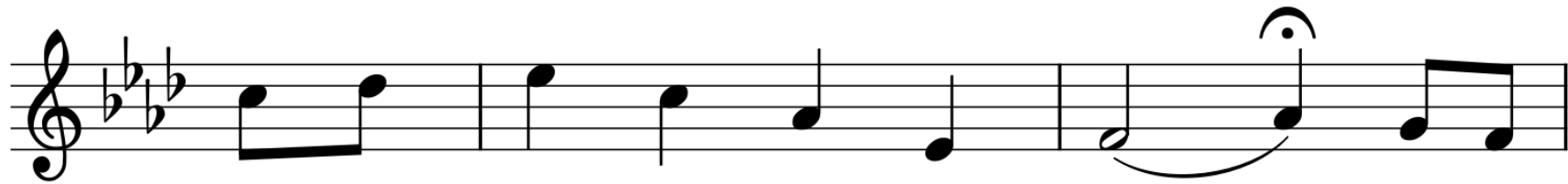
♩ = 120



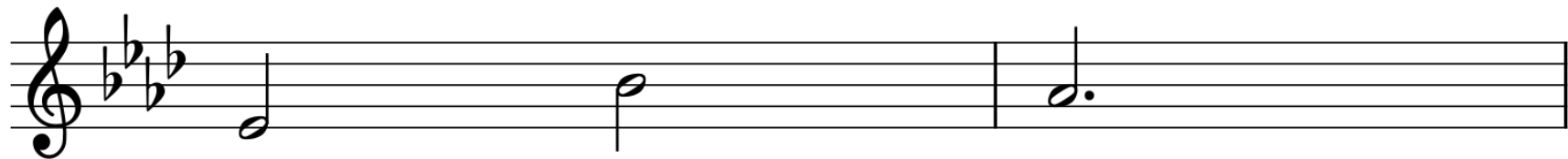
Tu-han 'ku cin - ta Di - kau, kar -



na 'ku mi - lik - Mu,



Ting-gal - lah di da - lam - ku, un-tuk



s'la - ma - nya,

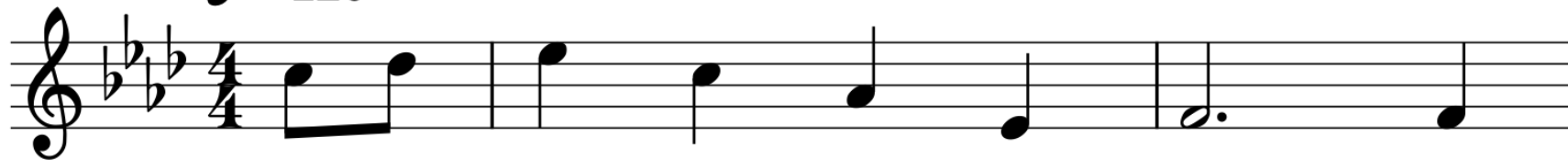
Tu - han 'ku cin - ta Di - kau, s'la -

lu 'ku mi - lik - Mu,

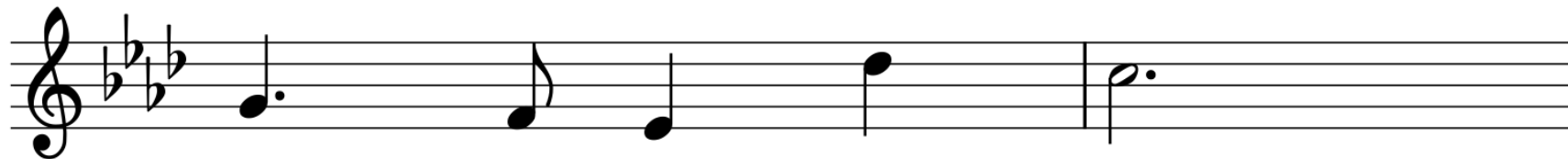
Kar-na Eng - kau cin - ta da - ku, ma-ti

ba - gi - ku.

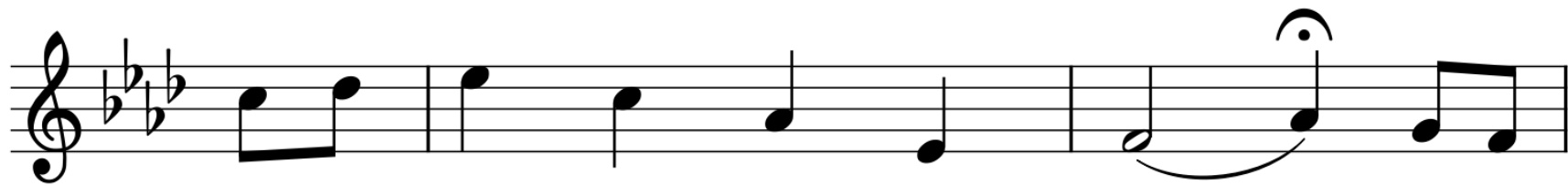
♩ = 120



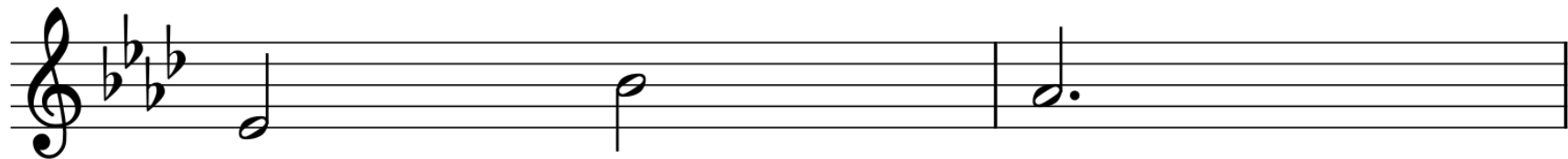
Ji - ka - lau 'ku mi - lik - i se -



lu - ruh du - ni - a,



Ta - pi hi - lang ka - sih - Mu, ti - a -



da gu - na,

Tu-han 'ku cin - ta Di - kau, s'la -

lu 'ku mi - lik - Mu,

♩ = 120



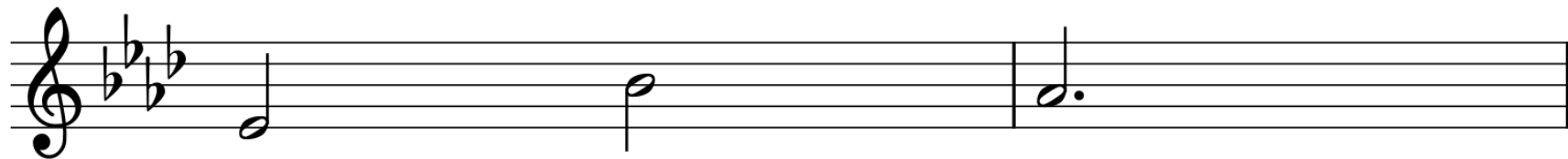
Si - a - pa yang di sur - ga, dan



sia - pa di bu - mi,



Ha-nya - lah Eng - kau sa - ja, yang'ku



ka - sih - i,

Tu-han 'ku cin - ta Di - kau, s'la -

lu 'ku mi - lik - Mu,

Kar-na Eng - kau cin - ta da - ku, ma-ti

ba - gi - ku.